



ETCHELLS WORLDS 2015
HONG KONG • NOVEMBER 1-7
ROYAL HONG KONG YACHT CLUB



2015 WORLDS
INFORMATION PACK – FEBRUARY 2015



ETCHELLS WORLDS 2015

HONG KONG • NOVEMBER 1-7
ROYAL HONG KONG YACHT CLUB



2015 WORLDS – INTRODUCTION & LOGISTICS

INTRODUCTION

Welcome to the 2015 Etchells Worlds Hong Kong. We are very much looking forward to hosting all overseas crews to Hong Kong this year to compete in the waters of one of the most exciting cities Asia has to offer.

We appreciate for some international crews looking to compete in the 2015 Hong Kong Worlds, additional support and information may be required. The Hong Kong Etchells Worlds Organising Committee is committed to assist on all aspects of getting you to Hong Kong to compete on a great racetrack and enjoy being hosted by the RHKYC in one of Asia's most dynamic cities. We are more than pleased to handle all enquiries from shipping to shopping and everything in between. We hope this 'Information Pack' will answer many of your questions.

First and foremost: The main regatta base including measurement and registration and the majority of the social functions will be **Kellett Island Clubhouse of the Royal Hong Kong Yacht Club** in **Causeway Bay** on Hong Kong Island. The daily racing will located off **Clearwater Bay**, approximately 35 minutes drive by road from Kellett Island Clubhouse.

This document contains an up to date summary on the logistics (shipping and loaner boats), accommodation, transportation, location of the racetrack, information on the facilities at the RHKYC, schedule of events, About Hong Kong and latest contact details.

All information is available in more detail on the following websites:

International Etchells Worlds website: www.etchellsworlds.org (new site available mid February)

RHKYC Etchells Class pages <http://www.rhkyc.org.hk/etchellsworlds2015.aspx>

Royal Hong Kong Yacht Club www.rhkyc.org.hk

LOGISTICS

Getting your boat to Hong Kong

RHKYC has partnered with GAC Pindar who are offering competitive rates to ship your boat. A one page summary guide, a detailed shipping proposal, information on shipping costs, lead times with dates and standard services the RHKYC boatyard at Kellett Island can provide are all available on the above websites. All boats will be delivered to Kellett Island in Causeway Bay and de-vanned there. Please visit the website for additional registration requirements in Hong Kong if you are planning to also ship a rib as a tow or coach boat to the Worlds. Please go to the websites to access the relevant documents you need.

Loaner Boats

As the only Etchells fleet in Asia, loaner boat opportunities for the APAC's and the 2015 Worlds will be limited. Having said that, we aim to try and accommodate as many requests as we receive.



ETCHELLS WORLDS 2015

HONG KONG • NOVEMBER 1-7
ROYAL HONG KONG YACHT CLUB



2015 WORLDS – RACE TRACK LOCATION

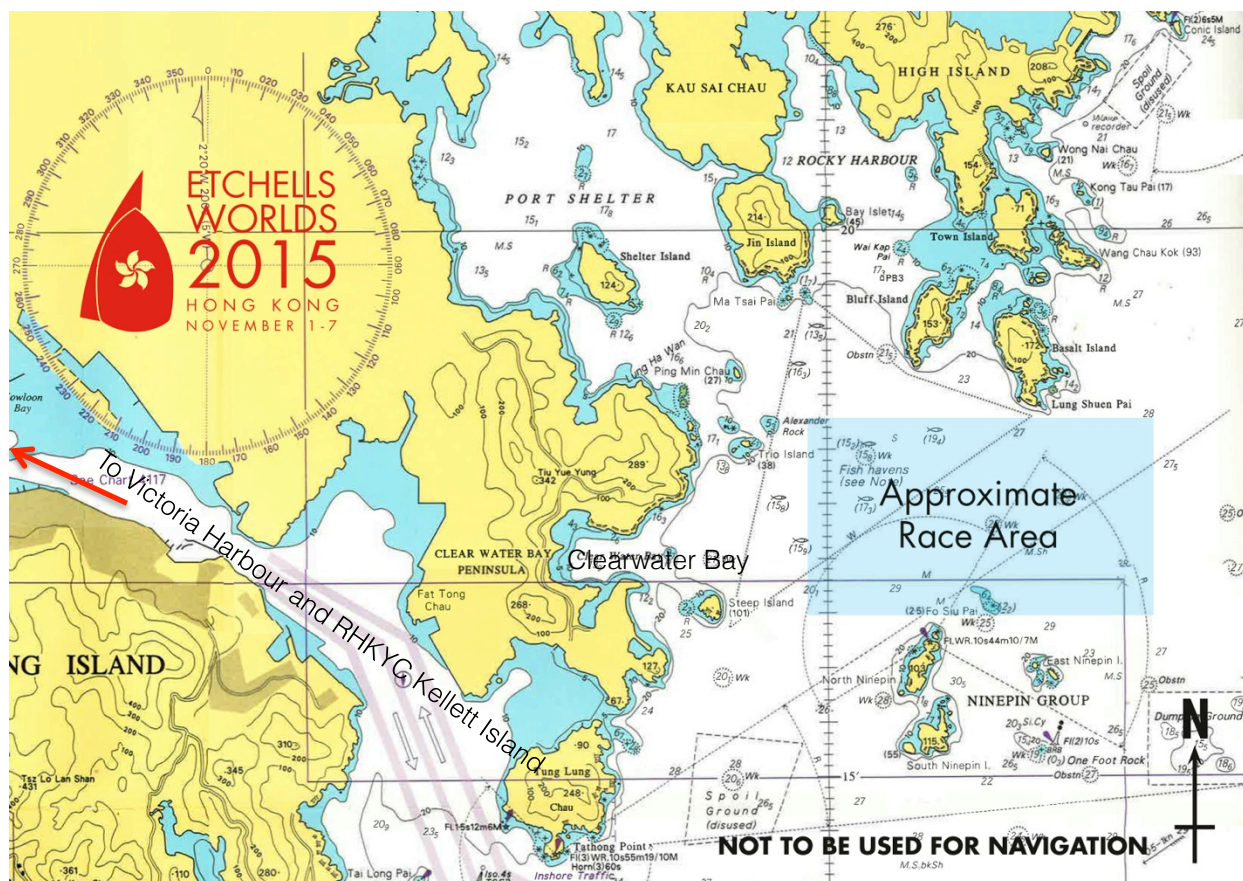
Loaner boats:

Once our local Hong Kong selection series for the Worlds is complete (mid May) we will have a clearer picture on the number of loaner boats available. We are also actively campaigning skippers who are not competing for Worlds selection to make their boats available too.

If you are interested in a loaner boat, please send your details (as an expression of interest) to etchells.hongkong@gmail.com so we can include your name on the list.

RACE TRACK

The 2015 Etchells Worlds will be raced adjacent to the Nine Pins group of islands, just outside Port Shelter in the eastern waters of Hong Kong. There are a range of course options available in this area.





ETCHELLS WORLDS 2015

HONG KONG • NOVEMBER 1-7

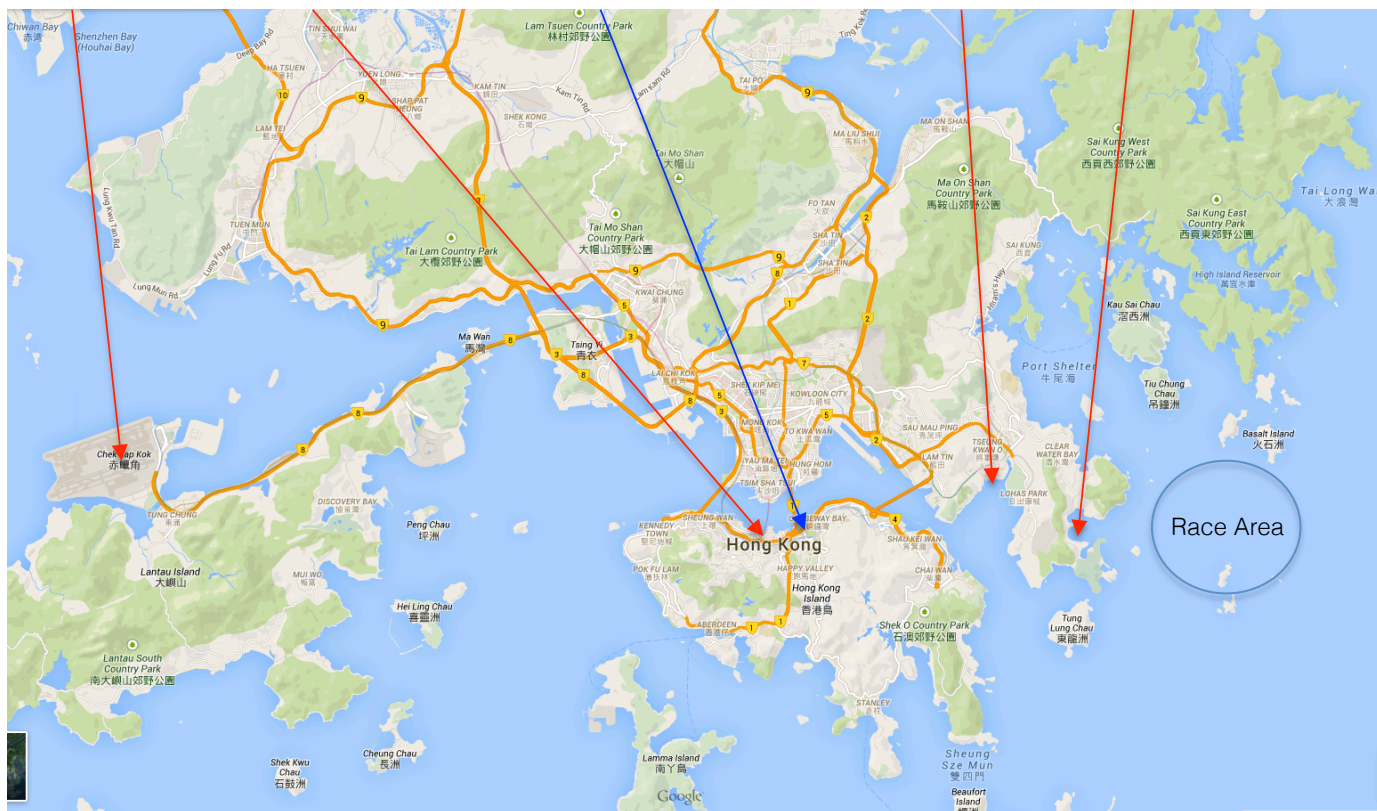
ROYAL HONG KONG YACHT CLUB



2015 WORLDS – RACE TRACK LOCATION

RACE TRACK AREA IN REFERENCE TO HONG KONG

Airport Downtown Hong Kong RHKYC Kellett Island / Causeway Bay Tseung Kwan O Clearwater Bay



TRANSPORTATION

Getting to the race track

Transportation will be provided from Kellett Island in Causeway Bay. It will run to a schedule leaving from Kellett Island and going directly to the regatta base at Clearwater Bay. There will also be a return service in the afternoon / evening to bring competitors back to the Kellett Island clubhouse.

Taxi's are also easily available in Hong Kong and the cost of a one-way trip from Kellett Island in Causeway Bay to Clearwater Bay is approximately HK\$ 200 each way.



ETCHELLS WORLDS 2015

HONG KONG • NOVEMBER 1-7
ROYAL HONG KONG YACHT CLUB



2015 WORLDS UPDATE - ACCOMMODATION

ACCOMMODATION

Which area to stay in while visiting for the Worlds?

We recommend two main areas to stay in for the Worlds – either close to the main RHKYC Kellett Island clubhouse in Causeway Bay or closer to the race track in Clearwater Bay.

Causeway Bay offers the energy and bustle of Hong Kong with late night shopping and a good selection of restaurants and bars for evening dining and entertainment. Clearwater Bay is closer to the race track and the hotels nearby (in Tseung Kwan O), are located in a more suburban setting about 12 minutes drive from the marina. Restaurants are available but would have less variety for dining than Causeway Bay.

1. Causeway Bay / Wan Chai area

As the RHKYC Kellett Island clubhouse is located on Hong Kong Island in Causeway Bay, it is close to shopping restaurants, and other attractions in Hong Kong. There are many hotels located close by within walking distance and others just a short taxi ride away.

Excelsior Hotel *

Managed by the Mandarin Oriental and popular with visiting sailors, the Excelsior is well known in the area for it's top service and the views of the harbour.

<http://www.mandarinoriental.com/excelsior/hotel/>

Mira Moon *

Situated on the border of Causeway Bay and Wan Chai, the Mira Moon is a boutique hotel with a contemporary and abstract interpretation of Chinese tradition.

<http://www.miramoonhotel.com>

J Plus*

Located further into Causeway Bay, J Plus offers some self catering suites.

<http://www.jplushongkong.com/home/en/>

Park Lane / Pullman Hotel *

Recently refurbished and with a wonderful roof terrace garden.

<http://www.pullmanhotels.com/gb/hotel-9843-the-park-lane-hong-kong-a-pullman-hotel/index.shtml>



ETCHELLS WORLDS 2015

HONG KONG • NOVEMBER 1-7
ROYAL HONG KONG YACHT CLUB



2015 WORLDS UPDATE - ACCOMMODATION

Causeway Bay / Wan Chai area (continued)

Other hotels worth checking out:

Butterfly on Morrison*

Located in Morrison Hill, this boutique hotel group offers reasonably priced accommodation

<http://www.butterflyhk.com/eng/our-hotels/on-morrison/>

Novotel, Wan Chai

Located further into Wan Chai, the Novotel is in the heart of the Wanchai bar and restaurant areas.

An easy taxi ride to the Kellett Island

<http://www.novotelhongkongcentury.com>

Regal Hotel, Causeway Bay

Deluxe five star hotel in the heart of Causeway Bay

<http://www.regalhotel.com/regal-hongkong-hotel/en/home/home.html>

Cosmopolitan Hotel

Located a short taxi ride away from the yacht club, this hotel has proved popular with other visiting sailors.

<http://www.cosmopolitanhotel.com.hk/?qclid=CNXX9Pbcw8MCFUclvAodYXAA3A>

Crowne Plaza Causeway Bay*

Very close to Times Square shopping complex with a good selection of restaurants close by

<http://www.cphongkong.com/eng/index.php>

Twenty One Whitfield

Situated on the other side of Victoria Park, this boutique hotel comes recommended

<http://www.twentyonewhitfield.com>

Lanson Place

Situated on the other side of Victoria Park, this boutique hotel also comes recommended

<http://hongkong.lansonplace.com>



ETCHELLS WORLDS 2015

HONG KONG • NOVEMBER 1-7

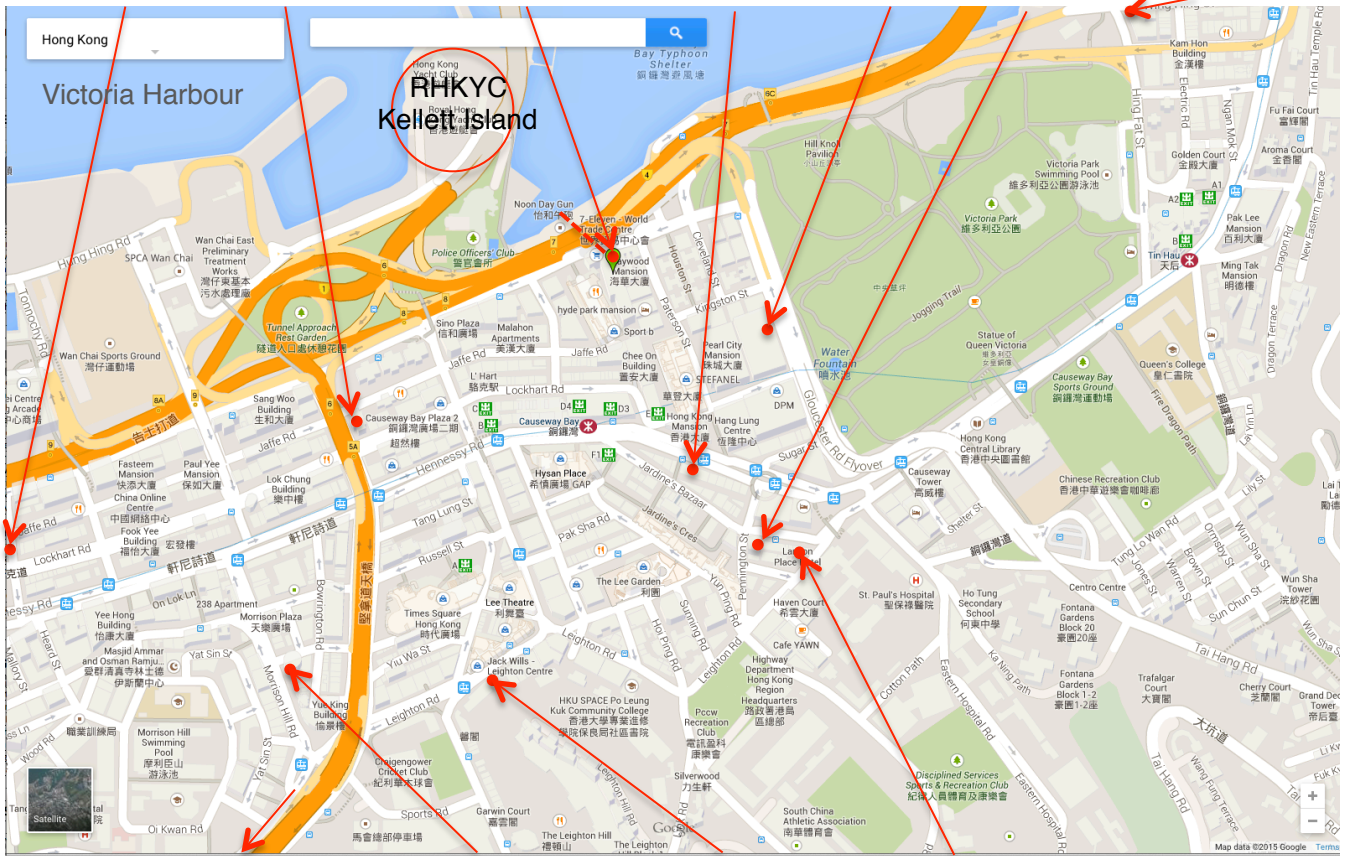
ROYAL HONG KONG YACHT CLUB



2015 WORLDS UPDATE – ACCOMMODATION MAP 1

Causeway Bay / Wanchai

Novatel Century Mira Moon Excelsior Hotel Regal Hotel Park Lane Pullman JPlus Twenty One Whitfield



To the the Cosmopolitan Butterfly on Morrison Crowne Plaza Lanson Place

----- Pedestrian tunnel under the highway to the RHKYC



ETCHELLS WORLDS 2015

HONG KONG • NOVEMBER 1-7
ROYAL HONG KONG YACHT CLUB



2015 WORLDS UPDATE - ACCOMMODATION

(2) Tseung Kwan O (refer map overleaf)

All of the below hotels are in the same twin tower complex situated in close walking proximity to several local shopping complexes in Tseung Kwan O.

Crown Plaza Hotel*

As the top hotel in this area, the guest rooms are clean and bright, complimentary Wi-Fi and a great rooftop bar. It also has a pool, gym and spa plus other facilities.

<http://www.ihg.com/crowneplaza/hotels/us/en/hong-kong/hkgtk/hoteldetail>

Holiday Inn Express*

The cheaper end of the Holiday Inn family, the Express model caters for budget traveller accommodation.

<http://www.ihg.com/holidayinnexpress/hotels/us/en/reservation>

Vega Suites

Located in the same twin towers at the above two hotels, Vega Suites offers serviced apartments with self catering from studios to up to three bedrooms. Only available on a monthly rental basis, these suites can be expensive but may suit some visiting families.

<http://www.vegasuites.com.hk>

(3) General Information

Airbnb

Please also try Airbnb. This is an accommodation website with Hong Kong listings where you can find some very unique and great deals including 2 bedroom apartments for short term lets especially if you are planning on coming with your family. Filter for accommodation in the two areas above that we have recommended - Causeway Bay / Wan Chai and Tseung Kwan O.

<https://www.airbnb.com/s/hong-kong?source=hdr>

We are currently negotiating discounted room rates at the hotels marked with an *. Booking forms reflecting the room rates will be available in due course on the websites for crews to make a reservation directly with the hotel to receive the discounted rate.

If you are still not sure what style accommodation you would prefer, which location is best for your program or you want to know what your budget will get you in Hong Kong, please email Jenny Cooper on etchells.hongkong@gmail.com and we can provide you with more specific advice. For families, we are happy to check out some places for you on the ground to make sure they can accommodate your needs.



ETCHELLS WORLDS 2015

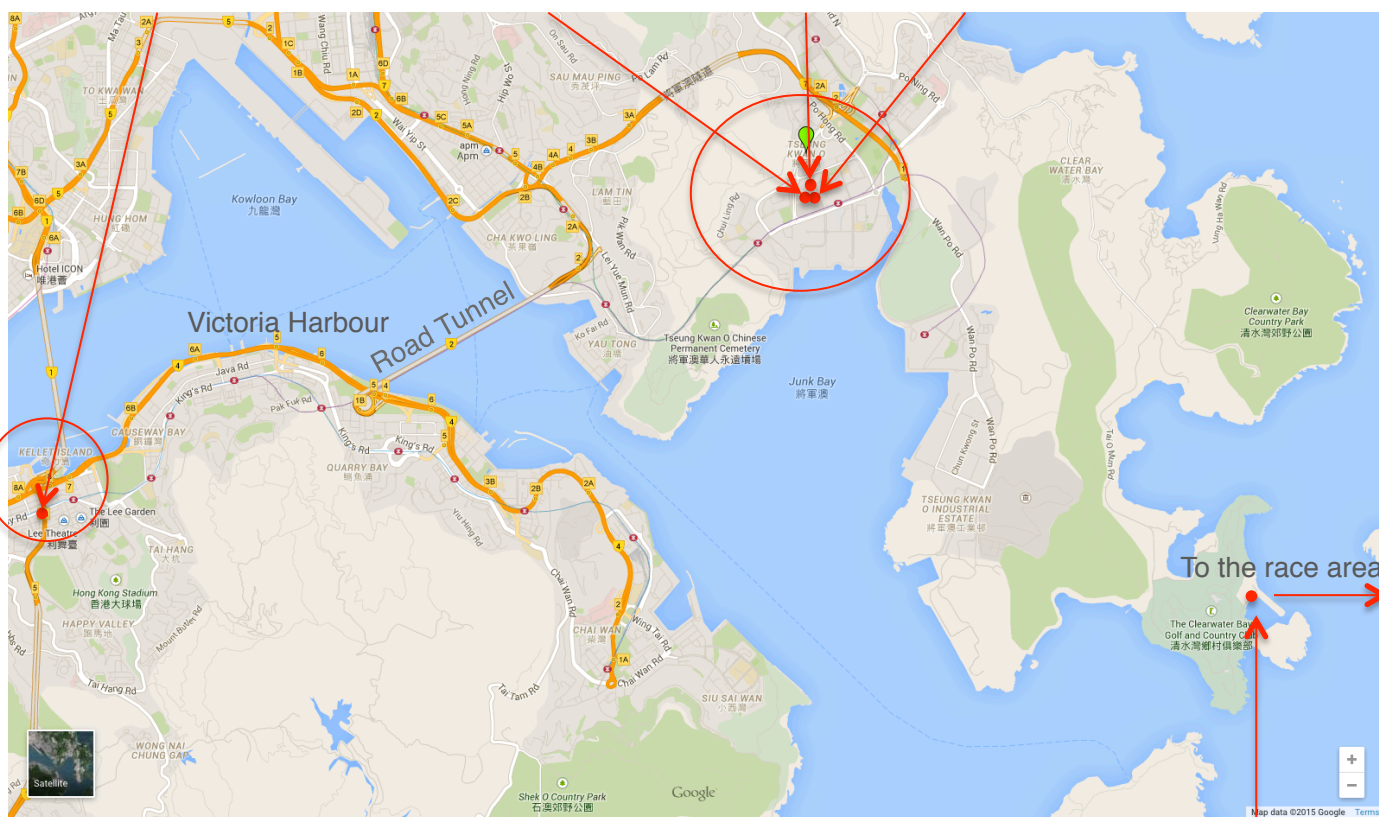
HONG KONG • NOVEMBER 1-7
ROYAL HONG KONG YACHT CLUB



2015 WORLDS UPDATE – ACCOMMODATION MAP 2

Tseung Kwan O

RHKYC Kellett Island Crowne Plaza Hotel Holiday Express Inn Vega Suites



Marina (Race Venue)



ETCHELLS WORLDS 2015

HONG KONG • NOVEMBER 1-7
ROYAL HONG KONG YACHT CLUB



2015 WORLDS UPDATE – ABOUT RHKYC

ABOUT RHKYC

Clubhouses and Facilities

RHKYC has three clubhouses – Kellett Island in Causeway Bay, Shelter Cove up north in Port Shelter and Middle Island on the south side of Hong Kong Island between Deep Water Bay and Repulse Bay.

The main clubhouse is Kellett Island and this is where the majority of the social functions will be held. It has the Main Bar, more casual dining in the Bistro and fine dining upstairs in the Compass Room. Although this clubhouse is going through some refurbishments at present, none of the above outlets will be effected. There are also full changing facilities, a swimming pool, a small gym plus the boatyard and marine operations.

Breakfast is available every day at the Bistro. Packed lunches are also available from the Bistro but will need to be ordered ahead of time.

Shelter Cove in Port Shelter, Sai Kung is the smallest clubhouse nestled into the trees above the marina. Offering a bar, BBQ and dining service, it is a relaxing retreat from downtown Hong Kong.

Middle Island is the sail training and youth sailing centre for RHKYC. It is also home to the RHKYC rowing crews. Situated on a small island and accessed by san pan, changing facilities, full bar service, BBQ and dining menu's are all available. Definitely worth a visit.

For opening hours of the facilities and any reservations for the Compass Room, please visit:
<http://www.rhkyc.org.hk/FandB.aspx>

Temporary Membership

RHKYC can offer all visiting sailors for the Etchells World Championships temporary membership at the club. As a cash-free club, the temporary membership allows visitors to use all three of the clubhouses with ease.

We recommend arranging your membership before you arrive in Hong Kong as then it is ready for you to pick up when you first arrive at the club. To arrange your temporary membership, please complete the relevant forms available on the website and email the Membership Office membership@rhkyc.org.hk. You will be required to provide your credit card details and we encourage crews to apply before 22 October, 2015 or earlier if you are visiting to race before the Worlds.

The invitation letter to join along with the forms to complete are available on the website at:
<http://www.rhkyc.org.hk/etchellsworlds2015.aspx>



ETCHELLS WORLDS 2015

HONG KONG • NOVEMBER 1-7
ROYAL HONG KONG YACHT CLUB



2015 WORLDS UPDATE – EVENT SCHEDULE

Asia Pacific Championships 2015

Hong Kong, October 24-26

Etchells World Championships 2015

Hong Kong, November 1 – 7

Schedule of Events

Asia Pacific Championships 2015

Thursday	October 22	Registration, RHKYC Kellett Island
Friday	October 23	Registration, RHKYC Kellett Island Skippers Briefing, RHKYC Kellett Island Welcome Drinks, RHKYC Kellett Island
Saturday	October 24	Race Day 1 - Asia Pacific Championships
Sunday	October 25	Race Day 2 - Asia Pacific Championships
Monday	October 26	Race Day 3 - Asia Pacific Championships Prize Giving, RHKYC

Etchells World Championships 2015

Thursday	October 29	Registration and Measurement, RHKYC, Kellett Island
Friday	October 30	Registration and Measurement, RHKYC, Kellett Island
Saturday	October 31	Registration and Measurement, RHKYC, Kellett Island Skippers' Briefing, RHKYC Kellett Island Opening Reception, RHKYC Kellett Island
Sunday	November 1	Crew Weigh-in Practice Race
Monday	November 2	Race Day 1 – Etchells World Championships
Tuesday	November 3	Race Day 2 – Etchells World Championships
Wednesday	November 4	Race Day 3 – Etchells World Championships
Thursday	November 5	Race Day 4 – Etchells World Championships
Friday	November 6	Race Day 5 – Etchells World Championships
Saturday	November 7	Race Day 6 – Etchells World Championships Prize Giving, RHKYC Kellett Island



ETCHELLS WORLDS 2015

HONG KONG • NOVEMBER 1-7
ROYAL HONG KONG YACHT CLUB



2015 WORLDS UPDATE – HELPFUL INFORMATION

ABOUT HONG KONG

Hong Kong is an international cosmopolitan city providing almost any service imaginable that anyone visiting would require. Apart from five and six star hotels, top Michelin star chefs and restaurants plus stunning views from the Peak, Hong Kong offers a diverse range of things to do and see while staying there. But first some basics:

The easiest way to get from the airport is to take the train. You can buy a ticket at the airport from the machine or from the attendant on the platform. It's always good to arrive with some local currency. The Airport Express runs every 10 minutes and the journey is 24 minutes long bringing visitors into the Hong Kong Express station in Central. From there, you can get a taxi to where you need to go or get the MTR (local train) from Central station which is an easy underground walk from the Airport Express (depending on your luggage). If you prefer to get a taxi from the airport to Hong Kong Island, the cost will be approximately HK \$360-\$380. There are return tunnel fees included in this cost in case you are wondering the extra charges are for.

Taxi's are relatively inexpensive in Hong Kong in comparison to the rest of the world. Taxi's only take cash and it is best to ensure you have \$100 bills or smaller as drivers are not happy when you give them a \$500 bill as they may not be able to change it for you. Although it is typical for a 10% service charge to be added onto most restaurant bills, tipping in Hong Kong is not common and you are under no obligation to tip a taxi driver. They will charge you \$5 if you call one to come to you and \$5 for each piece of luggage carried in the boot (trunk). Red taxi's are for Hong Kong Island and Kowloon.

Uber and Easy Taxi are present in Hong Kong working from local apps. Uber is significantly more expensive than a local red taxi but it does depend on the time of day. Red taxi's swap drivers at around 4 pm everyday so there will often be less taxi's around at this time. You can hail taxi's in the street and they can stop in most places to pick you up. Look for the light in the front windscreen and on the car roof to show they are available.

There are ATM machines all over Hong Kong to get cash. HSBC is the most prominent retail bank and they have ATM's with every branch but there are many others too accepting most international cards. There is no ATM at any of the RHKYC club houses as the club is cashless. Restaurants and shops will all take American Express, MasterCard and Visa at minimum.

Hong Kong is one of the safest cities in the world. The majority of it's citizen's are trustworthy. However, do not leave your bag unattended at any time as there could be pick pockets around the main tourist areas. Leaving items in taxi's is very common and in some cases you will get your goods back. Always get a receipt from your taxi driver as it will have the license plate number of the taxi printed on it. Check each time you leave a taxi you have all your valuables.



ETCHELLS WORLDS 2015

HONG KONG • NOVEMBER 1-7
ROYAL HONG KONG YACHT CLUB



2015 WORLDS UPDATE – HELPFUL INFORMATION

ABOUT HONG KONG (continued)

There are many things to do in Hong Kong. Below is simply a taster of what Hong Kong offers:

Outdoor:

Hong Kong may look like a collection of high rise concrete buildings but there are many lush green country parks to go hiking in. Most locals hike and make it a day out, enjoying a relaxed lunch at the end. You can get taxi's to various drop off points. Hong Kong Island offers the Hong Kong Trail (among many) and if you are game, you can walk the 50 km's from one end to the other or just sections of the trail for shorter walks. Being a mountainous city, there are always fabulous views to see of the outer islands. Recommend the Dragon's Back out at Shek O.

Other:

Visit the local markets in Kowloon: the Ladies Market, the Jade Market, the Night Market and many more.

Go to Lantau Island and climb the steps to the giant golden Buddha. You can take a cable car there or a bus.

Take a day trip to Macau and look in amazement at the entertainment capital of China bursting with casino's. Old Macau is still present and there are many historic buildings including a lighthouse to visit plus local stores, and well laid out museum. Ferries take approximately one hour each way from Hong Kong. Bring your passport and expect some immigration queues.

Visit Stanley and have a relaxed lunch after some shopping at Stanley Markets. Easily accessible by a bus from Central or Causeway Bay. Recommend to sit upstairs at the front to catch the scenery as the bus winds it way around the south side beaches to Stanley.

For children, Hong Kong has two amusement parks. It has it's own Disneyland out on Lantau Island (train ride to get there) and also Ocean Park located conveniently on the south side of Hong Kong Island. There are many other activities for kids such as the trampoline centre called RISE, ice skating rinks, exploring street food stalls, beaches and dinghy boats to sail ☺.

Most gentlemen when visiting Hong Kong get suits and shirts made. There are many tailors available and we would be happy to recommend some favourites in both Kowloon and on Hong Kong Island. They usually take three days and you need to allow for fitting session in between.

For the ladies, shopping trips can be arranged to visit Shenzhen for some local bargains but you will need a China visa to go there. These can be issued in Hong Kong and depending on the passport you carry, your visa could take a couple of days or you could get one at the border.



ETCHELLS WORLDS 2015

HONG KONG • NOVEMBER 1-7
ROYAL HONG KONG YACHT CLUB



2015 WORLDS UPDATE – CONTACT US

CONTACT US

Please feel free to contact us with any enquiry through the following channels:

Worlds Organising Committee

Ronan Collins	etchells.hongkong@gmail.com	Chairperson	9238 9072
Jenny Cooper		Vice Chairperson	6391 1958

Marine / Boatyard RHKYC

Joe Goddard	joe.goddard@rhkyc.org.hk
Simon Pickering	simon.pickering@rhkyc.org.hk

Shipping

GAC Logistics - Martin Helg	logistics.hongkong@gac.com
-----------------------------	----------------------------

Loaner Boats

Michael Coates	mcoates@kriyacapital.com
----------------	--------------------------

Sailing Office

Lindsay Lyons	lindsay.lyons@rhkyc.org.hk
Iris Yang	iris.Yang@rhkyc.org.hk

Accommodation

Jane Van Heel	jane@executivehomeshk.com
Jenny Cooper	jennycooper8@gmail.com

Visiting Membership

Tracy Leung	membership@rhkyc.org.hk
-------------	-------------------------

RHKYC – General telephone numbers

Kellett Island	Reception	2832 2817
	Main Bar	2239 0367
	Compass Room	2239 0374
Shelter Cove		2792 2744
Middle Island		2812 0365
Ship Shop		2239 0336

Prefix for Hong Kong is + 852